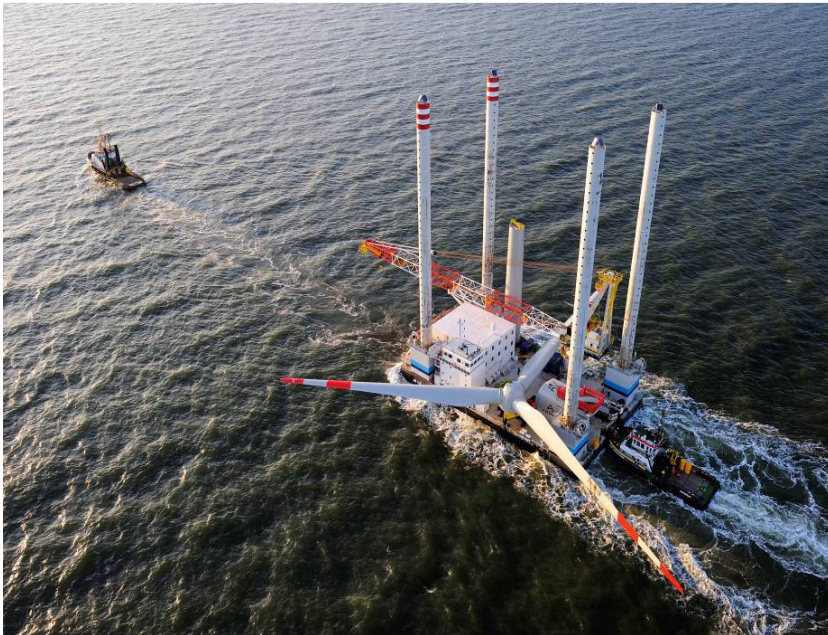


Alpha Ventus Wind Farm - Germany



“Favelle Favco Crane lifts Germany’s offshore windfarm”

The Alpha Ventus offshore wind farm is a pioneer project undertaken jointly by EWE AG, E.ON Climate & Renewable, and Vattenfall Europe New Energy. Situated some 45 kilometers north of the island of Borkum, in water about 30 meters deep, Alpha Ventus is the first German wind farm to be erected at sea under genuine offshore conditions. The design, construction, operation and grid integration of the Alpha Ventus research project as a test field will gather fundamental experience with a view to future commercial use of offshore wind farms.

A Favelle Favco crane model PC300 was used for installation of the 5 megawatt wind turbine. This model, with maximum capacity of 300 metric tonnes, has a hoisting speed of 7.5m/min at maximum capacity. This crane is equipped with 1000 bhp engine and was commissioned in May 2009.

Favelle Favco had also previously delivered the same crane model with twin hooks on the main hoist.