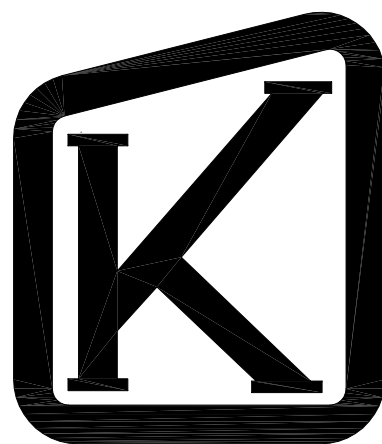
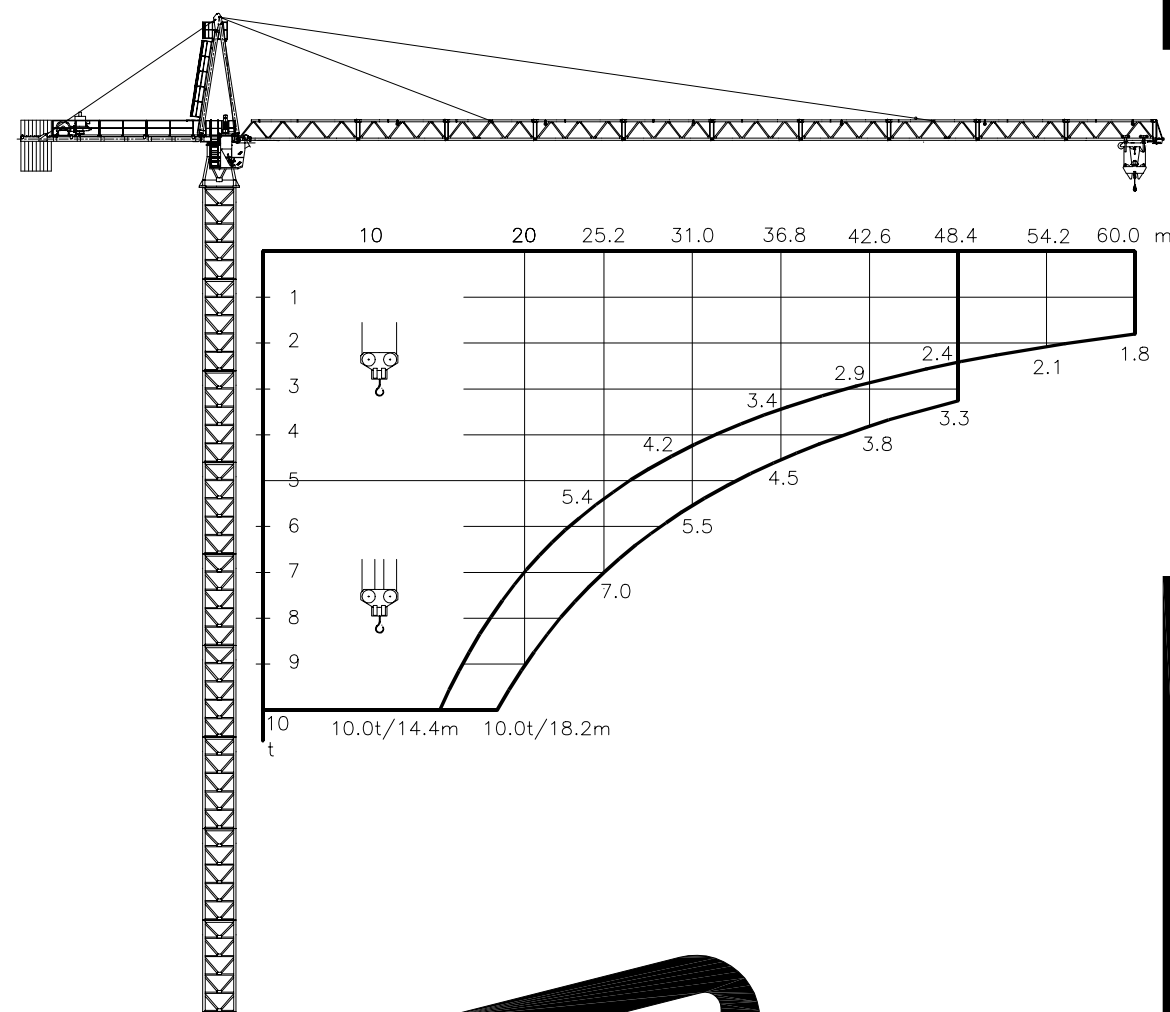


TECHNICAL
DATA

K-160



Mast sections
M22.1 / M22.2

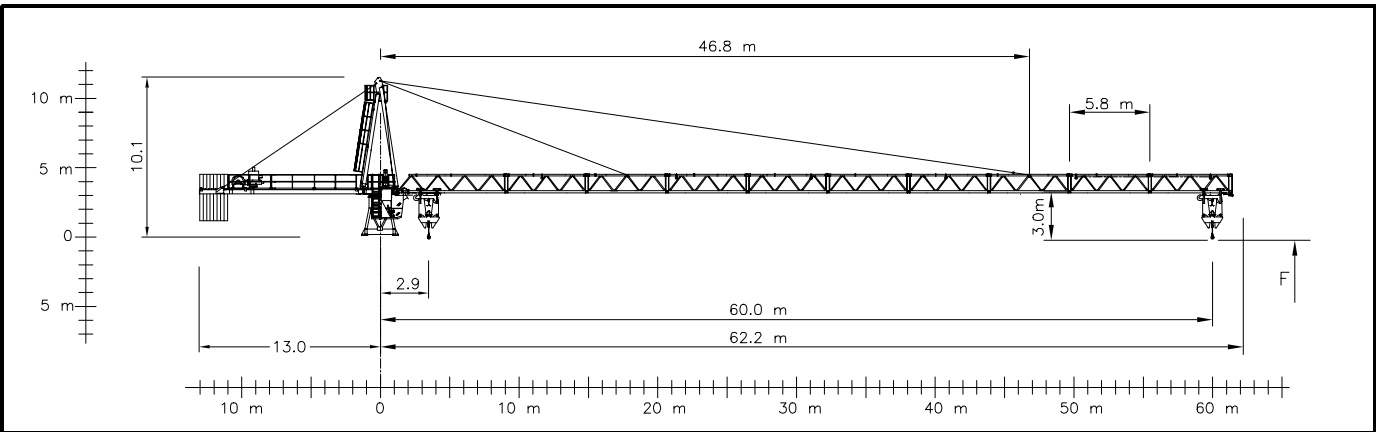
	3 x 400 V - 50 Hz	CONTROL VOLTAGE / STEUER SPANNUNG
	3 x 440 V - 60 Hz	
		24 VDC - 220 VAC

	HOIST WINCH/HUBWERK	30 kW (optional)	56 kW (standard)
	POWER CONSUMPTION/STROMVERBRAUCH	60 kVA	90 kVA
	FUSE / SICHERUNG	100 Amps	125 Amps
	POWER CABLE / HAUPTKABEL	4G35	4G50
	0-100 m	4G35	4G50
	100-175 m	4G35	4G50
	175-250 m	4G50	4G95
	0-2500 kg	0 - 60 m/min	0 - 100 m/min
	0-5000 kg	0 - 30 m/min	0 - 60 m/min
	0-5000 kg	0 - 30 m/min	0 - 50 m/min
	0-10000 kg	0 - 15 m/min	0 - 30 m/min

	2 x 5 kW	MAX JIB MAX AUSLEGER	0 - 0.7 RPM
	7.1 kW	10 t	0 - 70 m/min
	4 x 5 kW	F _{max}	25 m/min

HOIST ROPE	ø15 mm	FILL FACTOR 0.65	1770 MPa	BREAKING STRESS
HUB-SEIL	56 kW HOIST WINCH			BRUCHSPANNUNG
	500 m			
	>500 m *			
TROLLEY ROPE	ø8 mm			
LAUFKATZE-SEIL				

* CONSULT KRØLL CRANES A/S - NEHMEN SIE MIT KRØLL CRANES A/S KONTAKT AUF



		APPROX. ERECTION WEIGHTS UNGEFÄHRE MONTAGEGEWICHTE		
		L	kg	
1	TOP TOWER	2175		
2	MASTHEAD	3824		
3	CABIN	2000		
4	REAR JIB	4668		
5	CTM1622	2500		
6	M22-1	2553		
7	M022-1	2740		
8	M22-2	4011		
9	B22-1, 6m	7675		
10	B22-2, 6m	10500		
11	N22-1	1000		
12	N22-2	1350		
13	BASE PADS (4)	888		
14	CT22	9000		
15	HOIST WINCH	1875		
16				

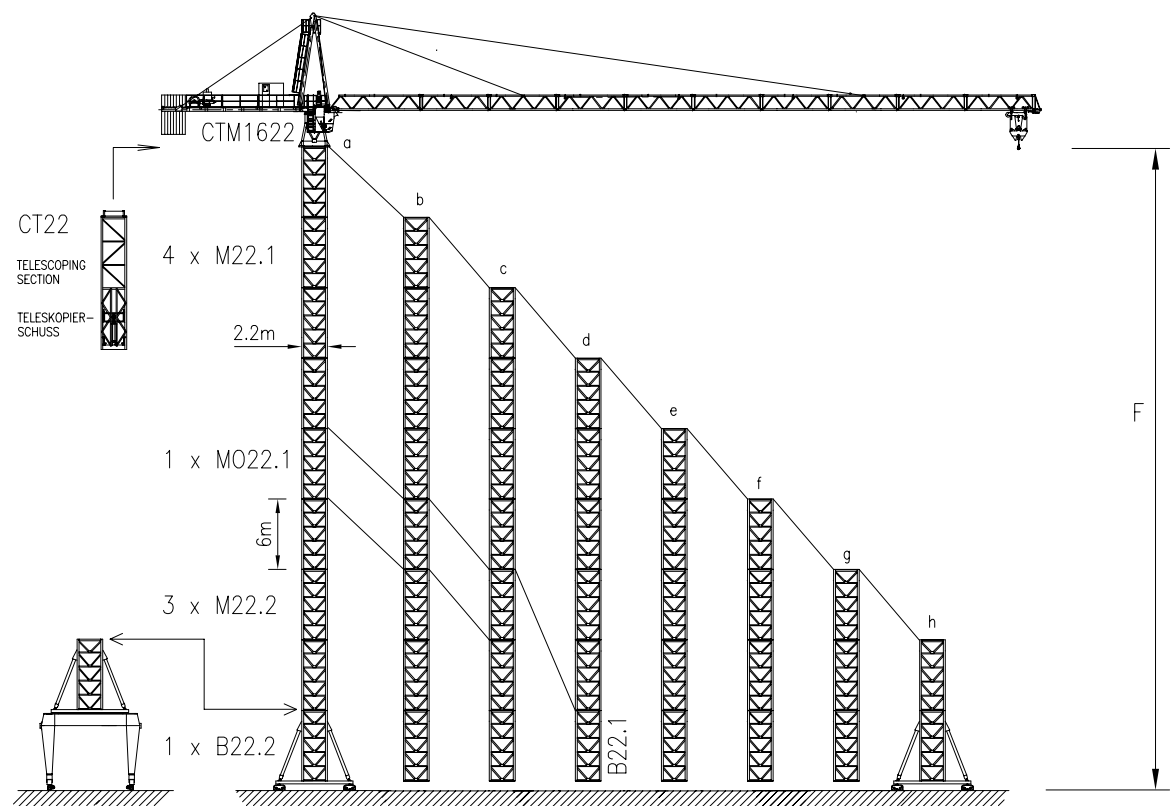
EXTRA EQUIPMENT AVAILABLE	
WALL TIE FRAMES, CABLE DRUMS, CURVE RUNNING AND 90° TURN BOGIES, ELEVATOR, FLOOD LIGHTING	
ZUSÄTZLICHE AUSRÜSTUNG VERFÜGBAR	
EINSPANNRAHMEN, KABELTROMMEL, KURVENFAHRENDE UND 90° DREHSCHEMEL, AUFZUG, SCHEINWERFER	



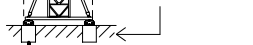

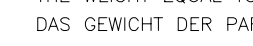
THE DESIGN AND TECHNICAL SPECIFICATIONS GIVEN ARE APPLICABLE TO THE STANDARD MACHINE OF CRANE K-160. MODIFICATIONS ACCORDING TO SPECIAL REQUIREMENTS REGARDING FOR EXAMPLE HOOK HEIGHT, JIB LENGTH, RAIL GAUGE, ETC.. ARE AVAILABLE. PLEASE CONTACT KRØLL CRANES A/S	
DIE KONSTRUKTIONS- UND TECHNISCHEN DATEN BEZIEHEN SICH AUF DIE STANDARD AUSFÜHRUNG DES KRANTYPS K-160. INDIVIDUELLE FORDERUNGEN Z.B. AN HAKENHÖHE, AUSLEGERLÄNGE, SPURWEITE USW. KÖNNEN BERÜCKSICHTIGT WERDEN. NEHMEN SIE MIT KRØLL CRANES A/S KONTAKT AUF	

KRØLL CRANES A/S

Nordkranvej 2 · DK-3540 Lyngby · Denmark · Phone: +45 48 187400 · Fax: +45 48 188807
E-mail: krollcranes@krollcranes.dk · www.krollcranes.com

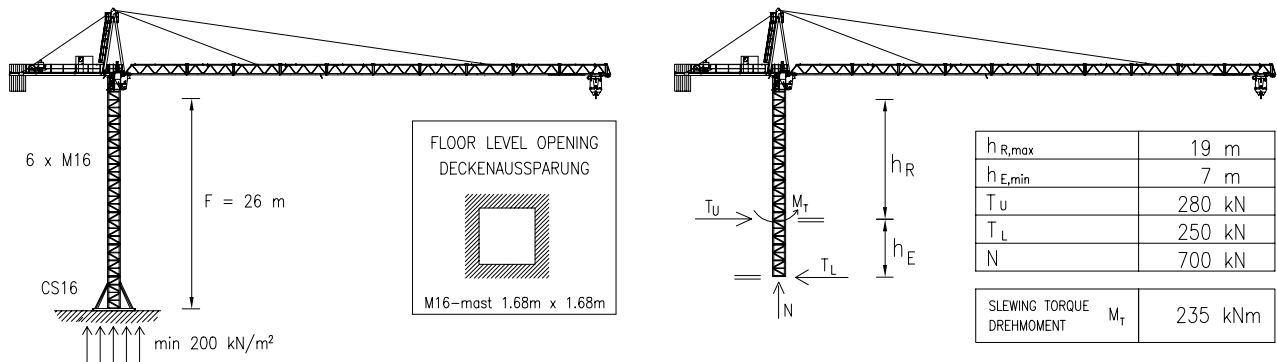
CONVERSION OF THE UNITS FOR FORCES UMRECHNUNG DER EINHEITEN FÜR KRÄFTE	10 N = 1 kg 10 kN = 1 ton	SUBJECT TO ALTERATIONS ÄNDERUNGEN VORBEHALTEN	DIN	DATA SHEET DATABLATT	K-160 010401
---	------------------------------	--	-----	-------------------------	-----------------



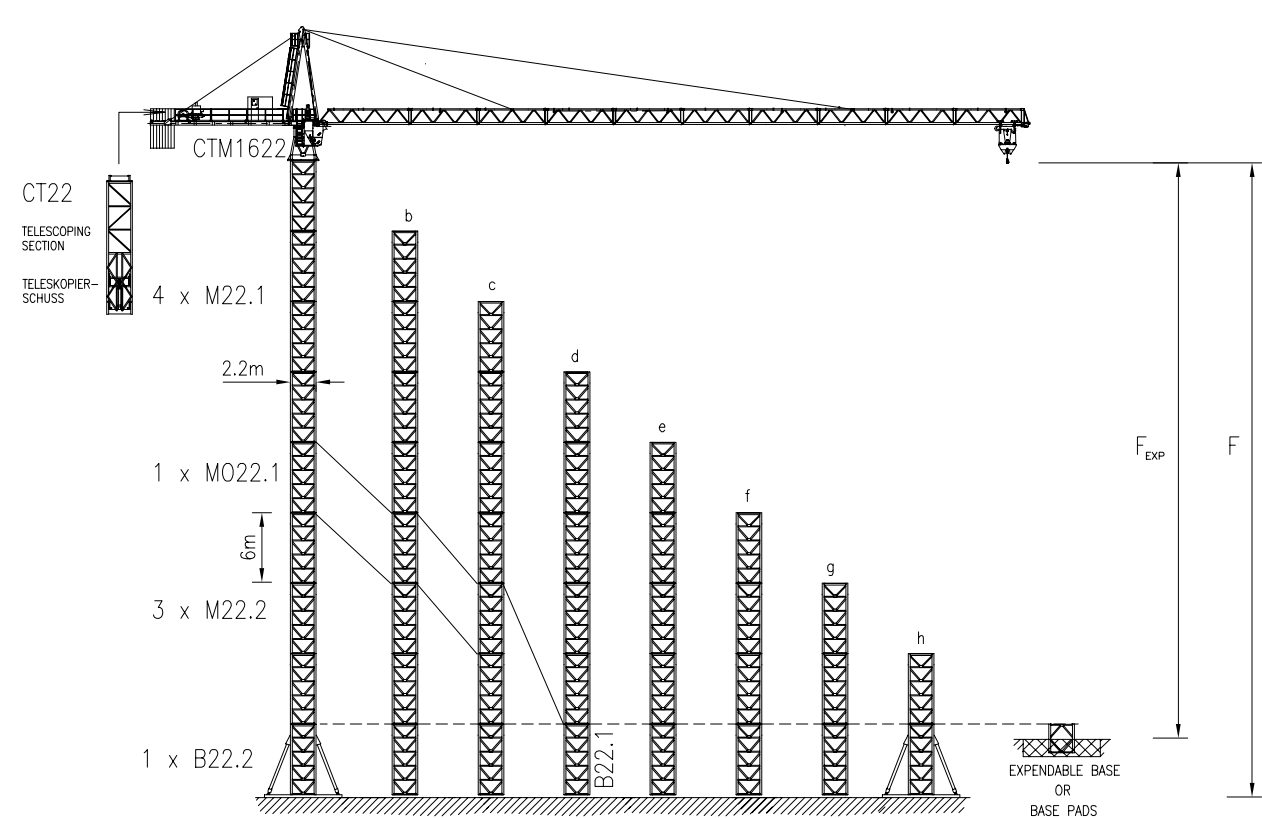
HOOK HEIGHT / HAKENHÖHE	F	m	a	b	c	d	e	f	g	h
	RAIL GAUGE SPURWEITE	m	6							
	BALLAST	t	33	23	16	15	9	12	23	17
	PARKING FOUNDATIONS * PARKIERUNGSFUNDAMENTE x4	t	25	19	15	12	10	6	0	0
	IN SERVICE IM BETRIEB	kN	930	850	730	630	550	490	440	400
	OUT OF SERVICE AUSSER BETRIEB	kN	1190	1040	830	630	470	350	310	290

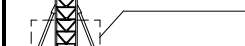




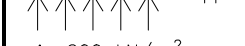



* THE WEIGHT EQUAL TO THE PARKING FOUNDATION BLOCKS MAY BE PLACED ON THE CROSS AS BALLAST UP TO TOTAL 100 t
DAS GEWICHT DER PARKIERUNGSFUNDAMENTE DARF AUF DEM KREUTZ ALS BALLAST (MAX TOTAL 100 t) GELEGEN WERDEN



K-160 CLIMBER / KLETTERKRAN



$h_{R,max}$	19 m
$h_{E,min}$	7 m
T_u	280 kN
T_L	250 kN
N	700 kN
SLEWING TORQUE DREHMOMENT M_t	235 kNm



HOOK HEIGHT / HAKENHÖHE	F	m	a	b	c	d	e	f	g	h
	BALLAST	t	9m BX 64	99	80	65	49	36	25	19
	IN SERVICE IM BETRIEB	kN	620	770	670	590	510	450	400	370
	OUT OF SERVICE AUSSER BETRIEB	kN	820	1000	800	620	450	340	310	290
	B x B x H H=1.0m	F	m	55	49	43	37	31	25	19
	B x B x H H=1.4m	B	m	8.2	7.5	7.0	7.0	7.0	7.0	7.0
	FOUNDATION WEIGHT FUNDAMENTSGEWICHT	ton	161	135	117	117	117	117	117	117
	B x B x H H=1.4m	F _{EXP}	m	49	43	37	31	25	19	13
	B x B x H H=1.4m	B	m	7.1	6.6	6.1	5.5	5.4	5.2	5.1
	FOUNDATION WEIGHT FUNDAMENTSGEWICHT	ton	169	146	125	101	97	90	87	

JIB CONFIGURATION												AUSLEGER KONFIGURATION												
JIB LENGTH AUSLEGER- LÄNGE	INNER SECTION	HEAVY SECTION	HEAVY EYE SECTION	HEAVY SECTION	LIGHT SECTION	LIGHT EYE SECTION	LIGHT SECTION	INNER STAY INNERE ZUGSTANG						OUTER STAY ÄUSSERE ZUGSTANG						COUNTERWEIGHT GEGENGEWICHT				
								1900 mm	700 mm	3110 mm	6100 mm	5440 mm	1150 mm	1110 mm	2450 mm	6100 mm	5670 mm	5710 mm	1150 mm			TOTAL t		
60 m	1	1	1	1	3	1	2	1	1	1	1	1	1	1	1	1	1	4	1	2	1	8	0	24.0
54 m	1	1	1	1	3	1	1	1	1	1	1	1	1	1	1	1	1	4	1	2	1	7	0	21.0
48 m	1	1	1	1	3	1	0	1	1	1	1	1	1	1	1	1	1	4	1	2	1	7	0	21.0
42 m	1	1	1	1	2	1	0	1	1	1	1	1	1	1	1	1	1	4	1	1	1	6	0	18.0
36 m	1	1	1	1	1	1	0	1	1	1	1	1	1	1	1	1	1	4	1	0	1	5	1	15.5
31 m	1	0	1	2	0	1	0	1	1	1	1	0	1	1	1	1	1	4	0	0	1	4	3	13.5